



Online Ground Water Monitoring

for the Olympic Games 2008, China

Description

During the 2008 Olympics the rowing, canoeing and marathon swimming competitions took place at the Shunyi Water Park, which is situated in the northeast of Beijing. The artificial lakes within the Shunyi Water Park are partly supplied with ground water from surrounding wells.

In cooperation with their Chinese cooperation partner BNEAT Co. Ltd., ribeka was contracted to design and install a ground water monitoring system for the premises of the Olympic Water Park. Several multi parameter data loggers were installed in the wells in order to monitor the quality of the ground water and the development of the water level. The data loggers are equipped with the latest generation of GPRS remote monitoring modules, so that monitoring can be done online and in real-time and the data is directly available in the ground water monitoring software GW-Base. Technical support for the ongoing project is given by our Chinese cooperation partner and by regular visits of ribeka personnel to Beijing.

Contact

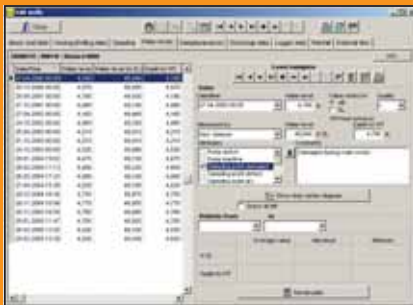
Erich Berger
(Managing Director / Hydrogeologist)

Period

2007 - ongoing



Client: Municipality of Beijing, P.R. China



Online Ground Water Monitoring of Frankfurt International Airport, Germany

Description

Frankfurt International Airport is the biggest airport in Germany and one of the busiest airports in the world, both in terms of passengers and cargo transported. The airport extends over an area of nearly 2.000 ha (20 km²) on which a great diversity of companies are active. Fraport AG, the operator of the airport, has the obligation to prove that the activities taking place on the airport premises, such as refilling, defrosting and maintenance of planes, do not negatively effect the ground water.

In order to comply with these obligations Fraport AG monitors the ground water quality on the premises by regularly taking samples and by evaluating the data from multi parameter data loggers. The data is imported online into GW-Base by the different parties responsible for the data acquisition (laboratories, consulting engineers, airport personnel). The environmental authority in charge of controlling the activities of the airport has online access to the ground water data using GW-Base.

Contact

Dr. Jürgen Richter
(Director Software Development / Geophysicist)

Period

2002 - ongoing



Client: Fraport AG – Operator of Frankfurt International Airport,
Germany