



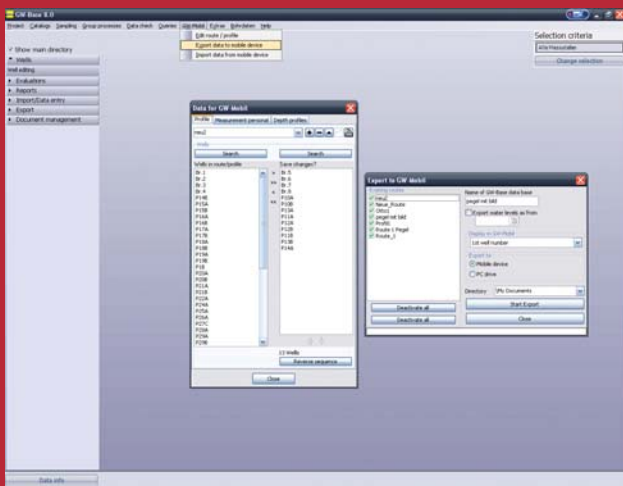
GW-Mobil®

Quality Assurance and Improvement in the Efficiency of Ground Water Data Acquisition in the Field

GW-Mobil® is a software solution for the acquisition of ground water data in the field, equipped with a set of quality assurance tools. False readings, the confusion of well names or transcription errors, that can happen to the most experienced personnel, are prevented. After the measurements have been carried out, the data is imported from the PDA directly into the ground water management system GW-Base® 8.0, which makes the labor-intensive work of formatting data before transferring it into another system unnecessary.

Some of the features of GW-Mobil®:

- maps, photos and basic well data that are stored on the PDA help to located and identify wells
- already during the entering of the data in the field the completeness and plausibility of the data is checked
- tools for planning and managing routes lead to an increase in efficiency
- data can be directly transferred from the PDA to the data base of GW-Base®, which saves time and eliminates type errors
- by using bar code scanners a confusion of wells is no longer possible
- the navigation system of the outdoor PDA can guide you to the wells





Route Planning

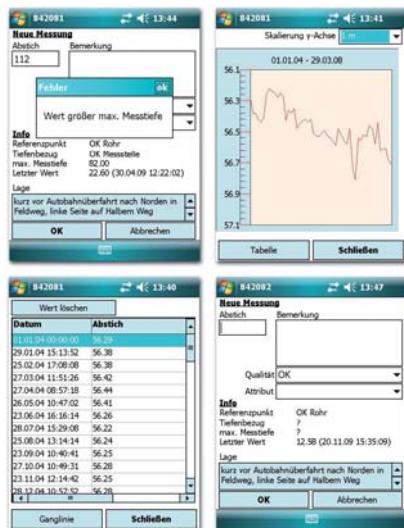
The planning of routes plays an important role in regular ground water monitoring, as an optimal measurement route and an easy to use route and personnel management tool can save a considerable amount of time. With GW-Base® 8.0 you can create measurement routes in table form or directly on a digital background map. These routes are then sent to a PDA, equipped with the software GW-Mobil®. Every route can be assigned to an unlimited amount of individuals, who login to the software before starting their measurements. This enables to later check which person took which measurement using GW-Base® 8.0.

Data Acquisition and Validation

With GW-Mobil® the water level and all other field parameters can be recorded, as well as counter readings and operating hours. It is also possible to quickly record a hydrochemical profile in the field, as data can be stored in relation to depth. The exact time of every measurement is recorded and thereafter displayed with the measurement in GW-Base® 8.0.

Before GW-Mobil® saves a value the plausibility of the value is checked. If user-defined variance tolerances are exceeded a warning is given, together with a request to verify or reenter the value. The plausibility of the value is also checked with respect to the basic data of the well.

With the user administration of GW-Base® 8.0 you can define if it is possible to see previous measurements with GW-Mobil® in the field. Measurements can be displayed in table form or as time series diagrams on the PDA.



Well Location and Identification

During the transmission of measurement routes from GW-Base® 8.0 to GW-Mobil®, maps, photos and basic well data is also transferred. This data facilitates the location of wells and reduces the danger of confusing wells.

If the wells are additionally equipped with bar codes they can be automatically identified using the integrated scanner of the PDA. This method eliminates the possibility of confusing wells.



Data Transmission

During the import of data from the PDA to the data base of GW-Base® 8.0 the plausibility and completeness of the data is again checked. The system gives a warning if values are detected that exceed thresholds or that strongly defer from previous measurements. Detailed information about the warnings can then be exported as a report or an Excel file.

