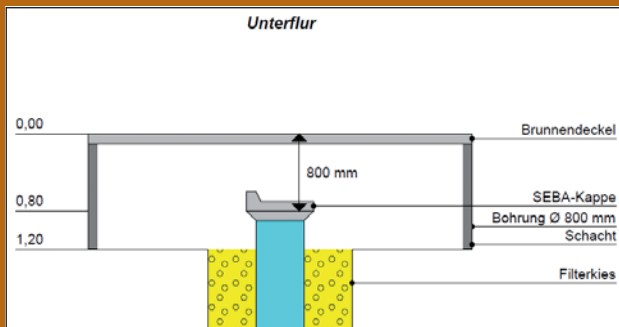
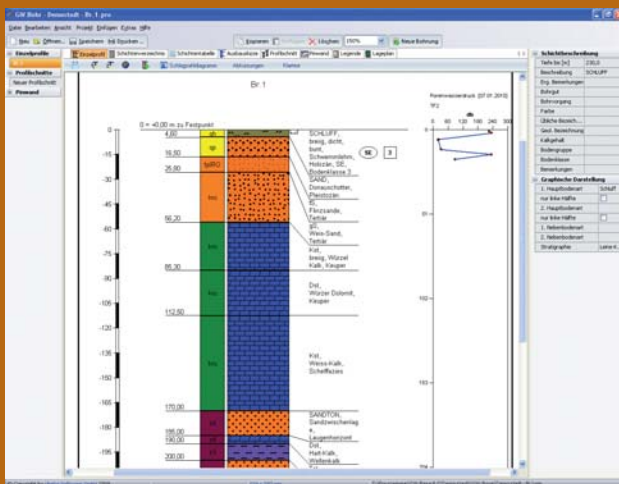




New!

GW-Bore[®]

Manage Borehole and Well Completion Data in GW-Base[®] and visualize it with GW-Bore[®]



GW-Bore[®] is a fully compatible extension of GW-Base[®] 8.0 with which the borehole and well completion data in the data base can be efficiently visualized. The new GW-Base[®] version 8.0 can manage all information on stratigraphy and well completion. Saving all geological, hydrogeological and technical data in one data base significantly facilitates the evaluation of the data.

With GW-Bore[®] you can create:

- well completion diagrams
- borehole logs
- borehole log forms
- sonding diagrams
- line charts and histograms
- diagrams of geothermal energy
- cross sections
- site maps

Creating Layers

You can create new stratigraphic layers in table form or directly in an empty borehole log. GW-Bore[®] will assort layers entered in table form automatically, depending on their depth below surface. The coloring of the borehole log helps you to identify the different materials at a glance, and the width of the materials displayed in the borehole log shows you the percentage of the different materials within each layer.



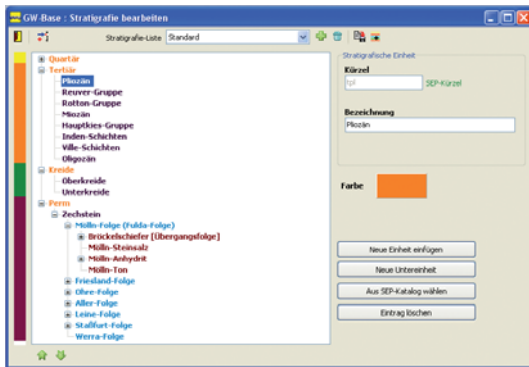
Profile Labeling

GW-Bore® offers two ways of entering layer descriptions:

- Text from graphic: Drag a soil or rock type with the mouse into a layer of the borehole log and GW-Bore® will add the appropriate layer description.
- Graphic from text: Enter the layer description in table form and GW-Bore® will automatically create the appropriate soil or rock type in the borehole log.

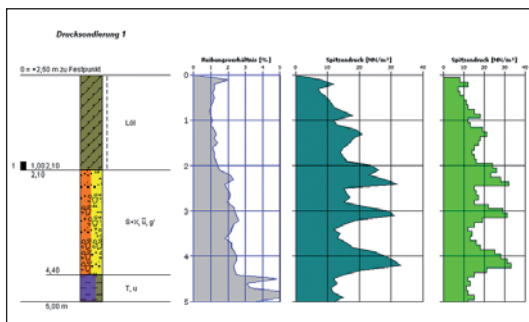
Stratigraphy

GW-Bore® comes with an extensive stratigraphy that can be customized and extended in order to be able to represent regional stratigraphic sequences / members. You can also import complete stratigraphic tables into GW-Bore® or export stratigraphic tables that you have edited with GW-Bore®.



Creating Diagrams

GW-Bore® creates line charts, histograms, results from SPT tests and diagrams of geothermal energy. The different diagram types can be displayed next to each other, allowing an overall evaluation of the geological situation. Furthermore, GW-Bore® offers a wide array of visualization and graphic export options.

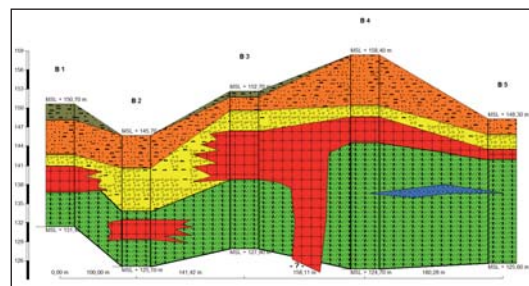


Cross Sections

GW-Bore® can display several borehole logs simultaneously. If the coordinates and elevations of the borehole logs are known, it is possible to create geological cross sections that are true to scale. Other drawing objects, e.g. the ground surface or an interpolated geological layer boundary, can be inserted into the cross section and edited.

Well Completion Diagrams

You can use GW-Bore® to create very detailed, true to scale well completion diagrams. Water level, bore hole filling, well cap or any other information about the well completion can be displayed with GW-Bore® and saved as an image file. The available selection catalogs of GW-Bore® expedite the process of creating new well completion diagrams considerably.



Site Maps

The site map of GW-Bore® gives you an excellent overview of the geographic position of the bore holes. Another useful feature is the possibility of creating cross sections directly from the site map.

Coordinates of the bore holes stated in the Gauss Krüger coordinate system can be exported from GW-Bore® as a KML file. Google Earth can read this file type and use the data to display bore hole locations. The often excellent resolution of the aerial images of Google Earth gives you a very good impression of the positioning and surroundings of the bore holes within your project area.

