



New!

GW-Web®

With GW-Web® your Ground Water Data goes online.

Publish your Data directly from GW-Base® on the Internet.

GW-Web® is a modern web application for the publication of ground water information on the internet. Project and customer related data can be published directly from GW-Base® and is thereafter available for users of GW-Web® with the necessary authorization. The display employs the maps and aerial images of the Google Maps service application.

The set up of a Web-GIS is not required. You only need an Internet Browser, such as Firefox or Microsoft Internet Explorer. During the upload of data from GW-Base 8.0 to GW-Web® Gauss Krüger coordinates are translated to UTM coordinates on-the-fly.

GW-Web® is designed to allow data access and exchange on different authorization levels:

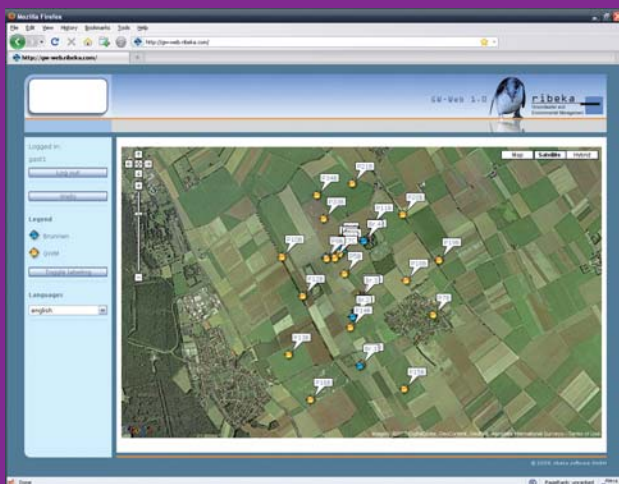
- password-protected area
- public area
- intranet area

GW-Web® is the ideal tool for:

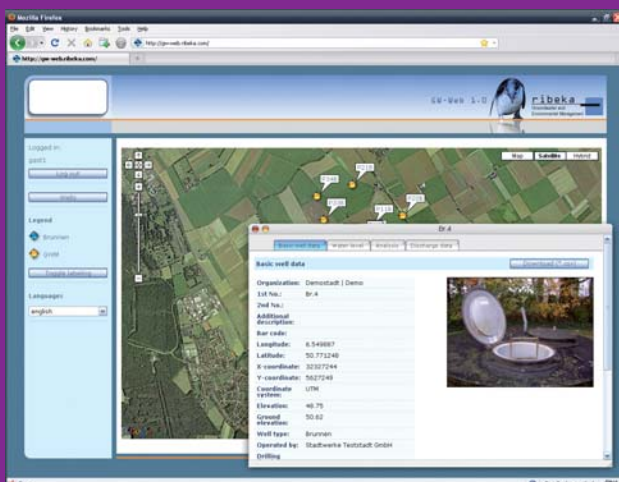
- exchanging ground water data online with partners
- informing a selected number of users
- supplying the public with information on the ground water situation
- giving access to ground water data depending on the task and authorization over the intranet or the internet

• **Test GW-Web® here:**
www.gw-web.ribeka.com

User name: gast1
 Password: gast1



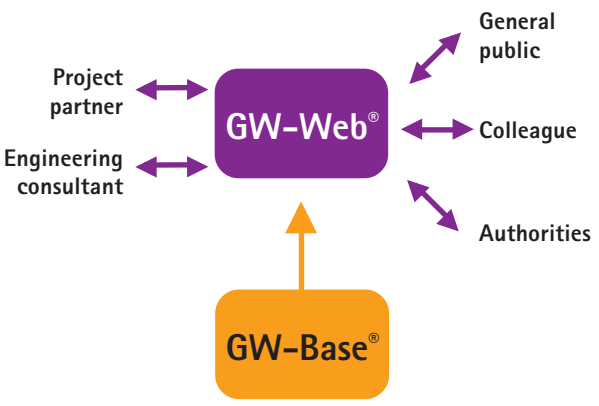
Administrator access



Basic well data



Structure of GW-Web®



Several organizations can use the same portal without losing their data sovereignty. This enables e.g. water supplier associations to host a web portal for the members of the association, in which every member can determine for himself, who is allowed to see which data.

Advantages:

- data is directly accessible without any prior conversions necessary
- user rights can be assigned for individual tasks
- GW-Web® does not need a map server for the public area
- the usage of Google Maps tools lead to cost reduction and easy handling
- no extra costs for Web-GIS and maps in the public area
- globally applicable
- automatic coordinate transformation
- compatible with all browsers
- intuitive and easy handling

Installation and setup

Three different license types are available:

- **Your GW-Web® on your own server**
The operator of the web server sets up the system himself and is therefore responsible for its maintenance and administration. This requires the purchase of the application and the data base scripts for the initial setup of the software on the web server. This usage model is suitable for service companies and self-managed users, who want to be independent from external providers and have the necessary know-how to setup and administrate the system.

Your web server must comply with the following requirements: Data base system MySQL 5; PHP5 application capability

- **Your GW-Web® on the ribeka server without administration duties**

After booking the service you receive an access to GW-Web®. You can register your own web address. We take care of the administration of the web site and you receive an access, with which you can manage and upload data from GW-Base® to GW-Web®. We take over the installation and setup of the system for you.

This usage model is suitable for all those who want to quickly and cost-effectively share data with other users, but do not want to have to deal with the web server administration and maintenance.

- **Your GW-Web® on the ribeka Server with administration duties**

After booking the service you receive an internet address of your choice (if the address is still vacant) from ribeka, as well as administrator access to the application. You can now directly start with the setup of GW-Web®.

This usage model is suitable for users, who do not want to manage a web server or a web space of their own, but want to carry out the administration of GW-Web® and GW-Base® themselves.

