

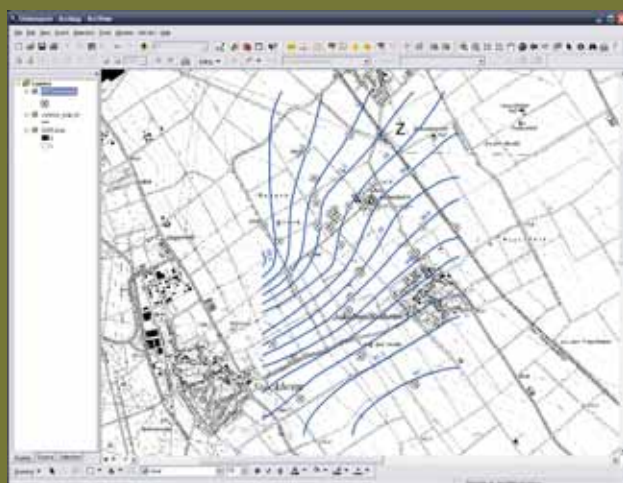
GW-Arc®

The Interface between GW-Base® 8.0 and ArcGIS®/ArcMap® for advanced GIS Evaluations

Although GW-Base® is in itself a GIS program, that uses georeferenced maps, can translate coordinates from one system into another and has an extensive map management, it may sometimes be necessary for advanced GIS evaluations to access the data base of GW-Base® directly from ArcGIS®/ArcMap®. GW-Arc® enables this access conveniently. Using GW-Arc® you can also create georeferenced images in GW-Base® and simultaneously embed them in ArcGIS®/ArcMap®.

Some of the functions of GW-Arc®:

- display well groups from GW-Base® in ArcGIS®/ArcMap®
- automatically refresh basic well data in ArcGIS®/ArcMap® (without having to import new shape files)
- contour maps can be created and directly embedded in ArcGIS®/ArcMap® using GW-Arc®
- the coordinates of wells created in ArcGIS®/ArcMap® are automatically transferred to the data base of GW-Base® 8.0
- the well filter tool of GW-Arc® sends a well selection made in ArcGIS®/ArcMap® to GW-Base®
- in ArcGIS®/ArcMap® the water level, analysis, logger and basic well data can be displayed in front of the background map
- you have access to all data of a well from ArcGIS®

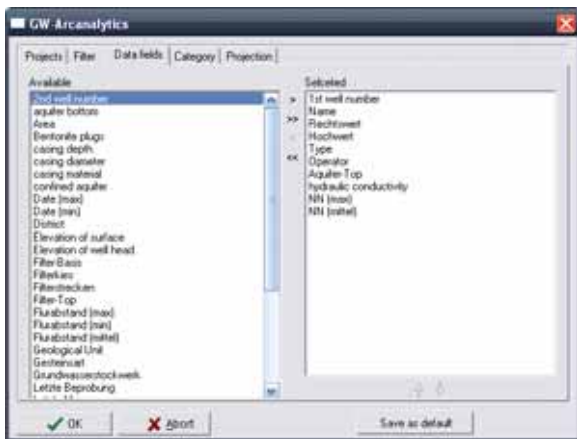


Date/Time	UTM X	UTM Y	Elevation	Group	UTM Z	UTM W	UTM V	UTM T	UTM S
28.05.08	113	62	0,02	5	0,8	1089	1089	205	-0,1
28.05.08	113	62	0,02	5	0,8	1076	1076	205	-0,1
28.05.08	114	59	0,07	5	1	960	960	205	0,0
28.07.08	114	59	0,08	5	0,8	976	976	205	0,0
19.08.08	112	57	0,07	5	0,8	924	924	205	0,0
25.02.01	110	53,4	0,04	10	0,8	907	907	212	0,0
24.09.01	109	49,9	0,02	5	1,0	990	990	210	-0,1
08.02.02	109	49	0,05	5	0,8	999	999	211	0,0
08.02.02	107	50	-0,08	5	1,0	960	960	212	0,2
12.02.01	102	52	1,16	5	0,8	903	903	20,8	0,2
17.02.01	109	50,8	1,26	5	1,0	928	928	19,1	0,0
20.04.04	99,9	50,9	0,41	5	1,0	702	702	14,8	0,1
20.11.04	99,9	42,9	0,04	1,000	1,0	991	991	19,0	0,0
13.09.05	108	59	-0,01	0,84	1	961	961	20,0	-0,1
29.11.05	99,9	56	0,02	0,17	1,0	973	973	19,0	-0,1
20.06.06	109,9	49,1	0,01	0,02	1	999	999	20,0	-0,1
20.11.06	109,9	49,0	0,02	0,02	0,8	908	908	20	-0,1
26.06.07	107,4	48,4	0,02	0,86	1	960	960	20,0	-0,1
21.04.08	102,2	50,2	0,01	0,01	1,0	999	999	20,0	-0,1



Displaying Wells in ArcGIS®/ArcMap®

With GW-Arc® you can select a group of wells from the data base of GW-Base® 8.0 and display them in ArcGIS®/ArcMap®. Thereby, the wells are inserted in form of an XY event layer and not as a shape of dBase file. This has the advantage that every time you start your ArcGIS®/ArcMap® project, alterations of the GW-Base® data base will be included. Your well information in ArcGIS®/ArcMap® is always up to date, without having to consistently generate and import new shape files. Of course, GW-Base® offers the possibility of creating shape files, that are not automatically changed or updated in ArcGIS®/ArcMap®.



Creating new Wells

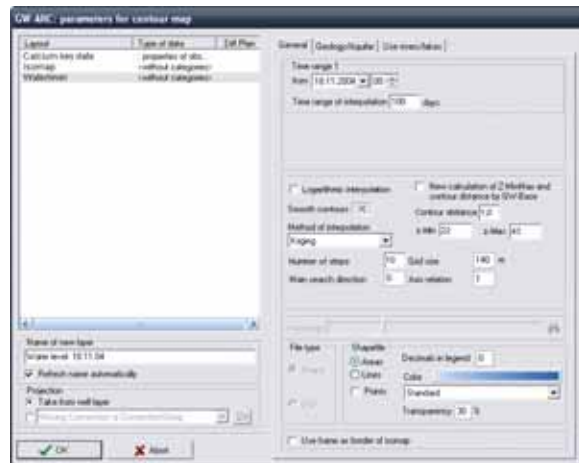
GW-Arc® can create new wells in ArcGIS®/ArcMap® that are then automatically stored in the data base of GW-Base® 8.0. The coordinates of the new wells are also transferred to GW-Base®. The software identifies which subproject you have been working on in ArcGIS®/ArcMap® and automatically assigns the new wells to the same subproject in GW-Base®.

Well Filter

The well filter tool of GW-Arc® sends a well selection to GW-Base® 8.0 which has been made in ArcGIS®/ArcMap®. GW-Base® then uses the selection as a filter, so that only these wells are shown. This tool enables you to conveniently carry out temporary, area specific well selections.

Creating Contour Maps

Once a contour map has been created in GW-Base® 8.0 and the settings for the generation of the contour map (interpolation method, contour line spacing, coloring etc.) have been saved as a template, you can directly access the template from ArcGIS®/ArcMap® using GW-Arc®. The software will then create and simultaneously embed the contour map as a shape file in ArcGIS®/ArcMap®. Before the contour map is created GW-Arc® enables you to modify the settings of the contour map, so that you can e.g. change the date. As opposed to many other programs, GW-Base® is not "blind" regarding hydraulically influential structures. You can digitize rivers, faults and blank areas, that are then taken into account when creating a contour map.



Info Tool

If you click on a well in ArcGIS®/ArcMap® with this tool the entire water level, analysis and logger data, as well as the most important basic well data of the selected well is displayed. The info tool represents a perfect connection between the geographical information system ArcGIS®/ArcMap® and the ground water data base GW-Base® 8.0.

